



BRAZILIAN PROFESSIONALS™

18" SMART SCREEN

CONGRATULATIONS on your purchase of the BRAZILIAN PROFESSIONALS SMART SCREEN, the digital solution for continuous promotion of BRAZILIAN BLOWOUT and BRAZILIAN BOND BUILDER services in your salon. Once installed, this marketing innovation is regularly updated with new content to help you realize optimum revenue from Brazilian Professionals brands on an ongoing basis.

<http://smartscreen.brazilianprofessionals.com/activate/>

IMPORTANT

Before assembling the BRAZILIAN PROFESSIONALS SMART SCREEN, please review the user guide below:

Please keep the device away from temperatures in excess of 122°F and under temperatures of 14°F.

Do not hit the device or place anything heavy on it.

Only use the accessories specified by the manufacturer.

Please keep the device away from chemicals.

Keep the device away from water and do not get it wet.

Device should only be serviced by a professional. Do not try to service it by yourself.

Unplug the power plug from the device when not in use.

In order to avoid damaging the device, never place heavy or sharp objects on the device either when in use or in transport it.

Secure all cables and cords together to help prevent tripping hazards.

Do not allow children to play with cables and cords.

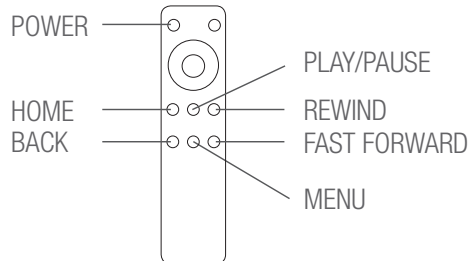
For details about the Smart Screen warranty, please visit brazilianprofessionals.com/smartscreen.

FEATURES

LCD Full HD 18" Screen, LED backlight
Quad-core Processor, RK3288
Android 5.1 O/S
10 Point capacitive touchscreen
SD Card Slot
WIFI 802.11 b/g/n
Bluetooth 4.0
HDMI Output

FUNCTIONS

REMOTE



WHAT'S IN THE BOX



SMART SCREEN MONITOR 18"



REMOTE



POWER ADAPTER



POWER CABLE



USER MANUAL



STAND



VESA MOUNT

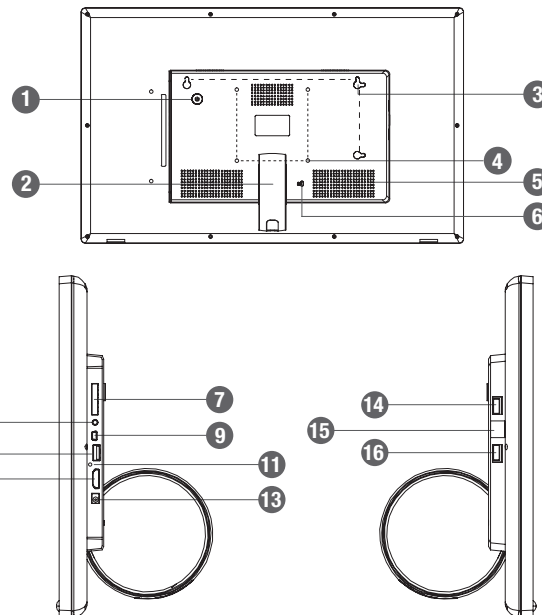


KENSINGTON LOCK

Please make sure that all of the above items are present when unpacking your Brazilian Professionals Smart Screen.

MONITOR

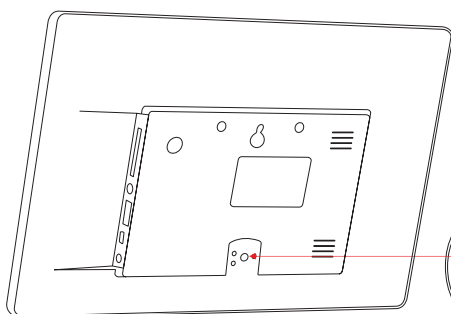
1. POWER
2. STAND
3. VESA MOUNT
4. KEYHOLES FOR WALL
5. SPEAKER
6. KENSINGTON LOCK
7. SD CARD
8. EARPHONE
9. MINI USB
10. USB
11. MICROPHONE
12. HDMI
13. DC IN
14. USB
15. RJ45
16. USB



1. GETTING STARTED

To set up your Smart Screen, you first need to attach the stand. To attach the stand, line up the hole in the stand with the hole in the back of the device, insert Kensington Lock and twist until lock is securely in place.

1. Place the frame horizontally on a flat surface.
2. Insert the power adaptor into the DC socket on the back of the device.
3. The device will automatically start up.

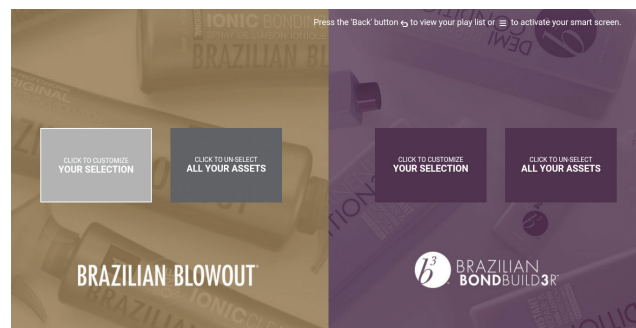


TO ATTACH THE STAND

2. SMART SCREEN INSTALLATION PROCESS

GETTING STARTED

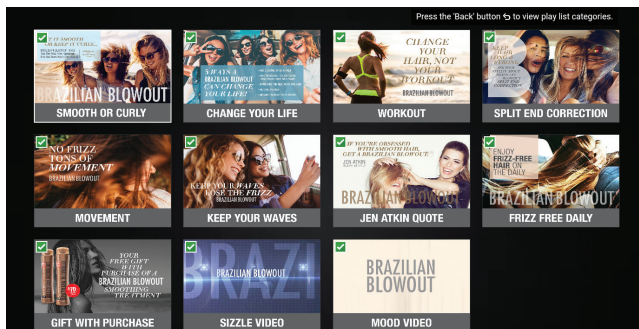
- Plug in the power cable to the power port on the back of the monitor.
- Wait about 30 seconds for your device to boot up. You will see the Android logo and a loading image while booting.
- You will be directed to this screen- the main menu:



- If this is your first time using the device, we recommend setting up the wi-fi for your device.
- By setting up the wi-fi and following the instructions to activate your device (see instructions below), you will be able to receive the latest content from Brazilian Blowout and b³ via updates.
- Please note, your device will already be pre-uploaded with the most recent content upon receiving your new smart screen.

3. WI-FI SETUP AND DEVICE ACTIVATION (RECOMMENDED BUT NOT REQUIRED)

- In the main menu, press the menu button (*between - & + buttons*) to go to the wi-fi setup page.
 - If you have not done so already, toggle the wi-fi button to the “on” position by pressing the “OK” button on your remote.
2. Click to Select. This will add all content into your playlist (*content you choose to play*).
 3. Click to Un-Select. This will de-select all content from your playlist.
 4. Click to Customize your selection (*same for Brazilian Blowout and b³ content*).



- This option will allow you to individually select/ un-select content for your playlist.
- If you chose the “Click to Select All Your Assets”, then all content will have a green check box, checked at the top right of the content.
- Content with a green checkbox, checked in the corner will be added to your personal playlist.
- Content with an empty check-box in the corner is not in your playlist.
- To preview content, select the video you wish to view and press the play button (*located directly above the menu button*).
- When you have chosen content for your playlist, press the back button on your remote (*arrow above the + button*) or menu button to return to the main menu.

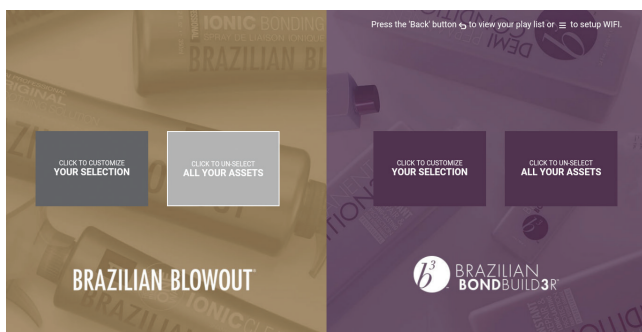
4. MAIN MENU

- In the main menu, you will have four options; you can use the arrow keys to navigate the menu.
- Press the “OK” button to select any of the options.
- Option from left to right.

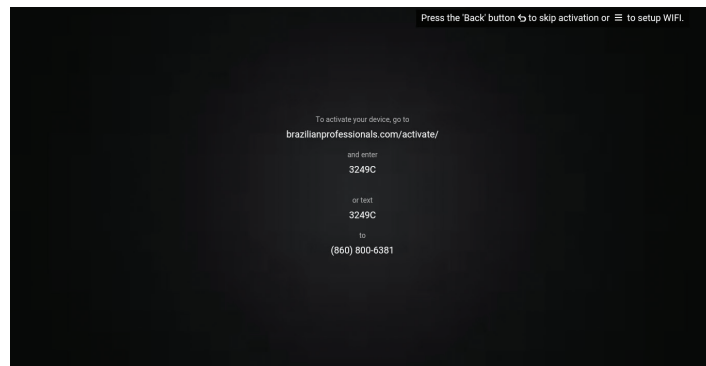
1. Click to Customize Your Selection (*Brazilian Blowout Content*).
2. Click to Un-Select/Select All Your Assets (*Brazilian Blowout Content*).
3. Click to Customize Your Selection (*b³ Content*).
4. Click to Un-Select/Select All Your Assets (*b³ Content*).

5. CREATE A PLAYLIST

1. Click to Un-Select/Select All Your Assets. (*Same for Brazilian Blowout and b³ content*).



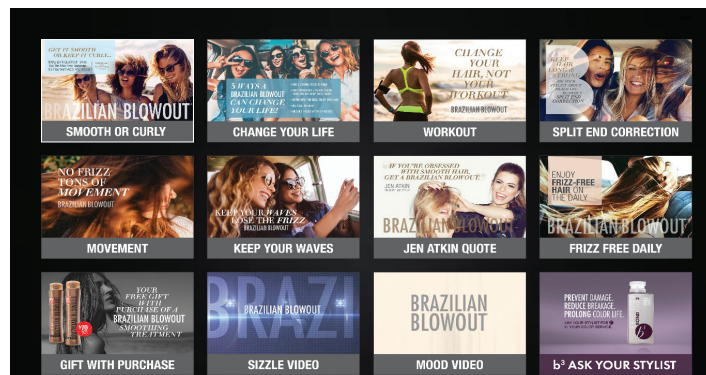
- Select your wi-fi network and enter your wi-fi passcode.
- Once your wi-fi has connected, press the back button (↩) to return to the main menu.
- Press the menu button to go to the “activate your device screen”.



- Follow the instructions onscreen to activate your device either by going to the URL listed on your computer and entering the code given or, by texting the activation code to the number prompted.
- Follow the instructions on your computer or phone to register your device.
- Phone users have the ability to control their Smart Screen via the mobile app or browser (only while either is connected to the internet).
- Once activated, the device will return to the main menu.

6. VIEWING YOUR PLAYLIST

- While in the main menu, press the back button on your remote (arrow above the + button) to view your personal playlist comprised of content you chose.
- Press play while in your playlist to play your content randomly (random shuffle).
- Press ok on any video to play that content and cycle through the playlist in sequential order (video directly following, one next to that, and so on).



7. CONTROLS DURING VIDEO

- During the video, you have the ability to:
1. Play/pause using the play button (above menu button)
 2. Adjust volume using + & - buttons
 3. Press left arrow key to view previous video
 4. Press right arrow key to view next video